

Official agent Benelux

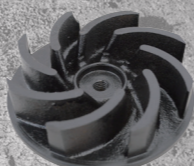
www.ipspumps.be



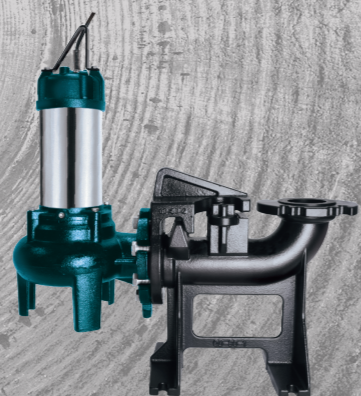
2.5" & 3" FULL FREE PASSAGE
SUBMERSIBLE SEWAGE PUMP

HIPPO DN

SERIES 50HZ



Vortex Impeller



HIPPO-150 DN80 with QD-80



HIPPO-200 DN65

Features

- Vortex impeller design
- 2.5" & 3" (65mm & 76mm) solid free passage
- EKK Eagle Burgmann double mechanical seal CA/CE & SIC/SIC
- Stainless Steel motor housing
- Volute connection available in DIN PN10/16

Applications

- For heavy-duty applications with soiled biological wastewater, sewage, rainwater
- For both domestic and professional use

Data Chart

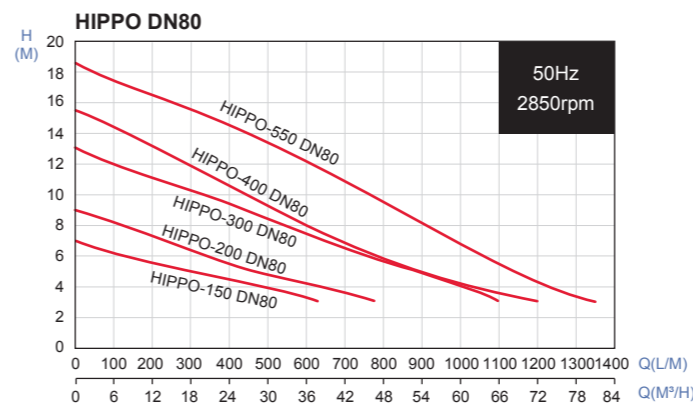
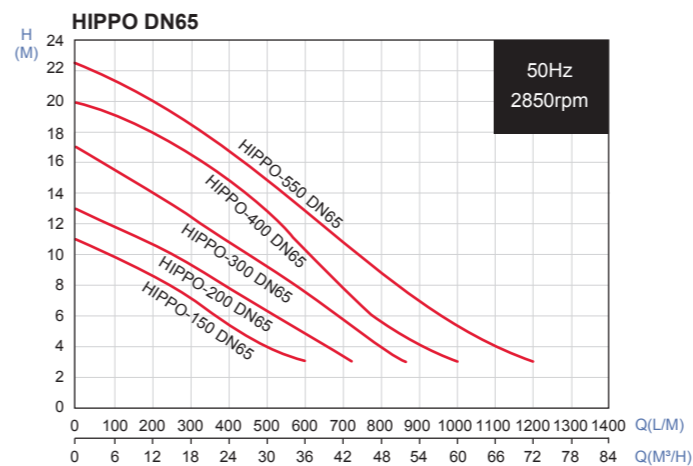
Type	Output		Discharge	F.L.A.		Rated		Maximum		Free Passage	Weight(W/O Cable)		Q.D.C.
	HP	kW		1ø 230V	3ø 400V	Head M	Cap. LPM	Head M	Cap. LPM		mm	1ø-kg	
HIPPO-150 DN65	1.5	1.1	2.5"	10A	3A	6.6	330	11	600	65	26.3	26.3	QM-65
HIPPO-200 DN65	2	1.5	2.5"	12A	3.9A	8.4	360	13	720	65	28.5	28.5	QM-65
HIPPO-300 DN65	3	2.2	2.5"	-	6A	12.6	300	17	870	65	-	29.6	QM-65
HIPPO-400 DN65	4	3	2.5"	-	6.5A	13	500	20	1000	65	-	37.3	QM-65
HIPPO-550 DN65	5.5	4.1	2.5"	-	9.1A	15	500	22.5	1200	65	-	39.3	QM-65
HIPPO-150 DN80	1.5	1.1	3"	10A	3A	4.4	415	7	630	76	29.6	29.6	QD-80
HIPPO-200 DN80	2	1.5	3"	12A	3.9A	5	460	9	780	76	31.8	31.8	QD-80
HIPPO-300 DN80	3	2.2	3"	-	6A	9.5	400	13	1100	76	-	32.9	QD-80
HIPPO-400 DN80	4	3	3"	-	6.5A	8	600	15.5	1200	76	-	39.1	QD-80
HIPPO-550 DN80	5.5	4.1	3"	-	9.1A	8	900	18.5	1350	76	-	41.1	QD-80

» All single-phase pumps can be equipped with float switch upon request.

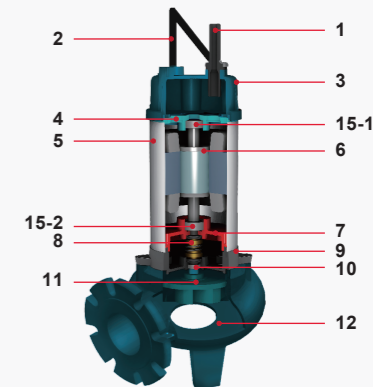
Specifications

Liquid Temperature	0~40°C (32~104°F)	
Submersible depth	10M	
Motor Part	Frequency	50Hz
	Pole	2 Pole
	Type	Dry Type
	Insulation	Class F
	Protection	IP 68
Pump Part	Protector	Auto-cut
	Bearing	Ball Type
	Mechanical seal	Double Mechanical Seal
	Impeller	Vortex Impeller

Performance Curve



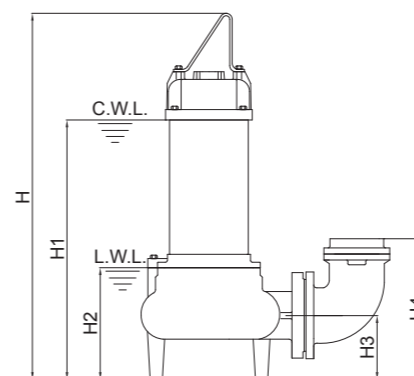
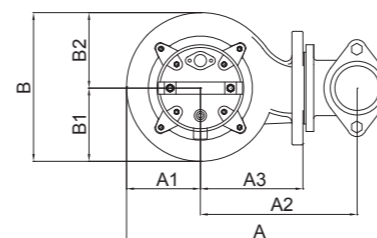
All technical information is subject to change without notice.



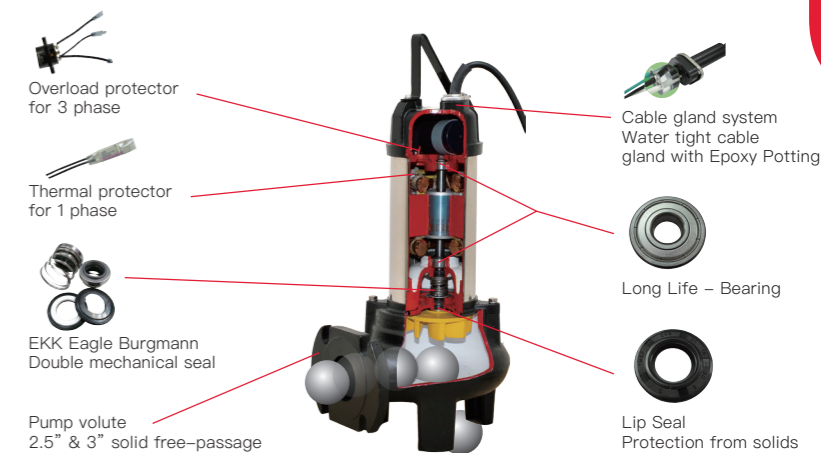
Parts and Material List

No.	Part	Material
1	Cable	H07RN-F
2	Handle	SS41
3	Motor Cover	EN-GJL-200
4	Bracket	EN-GJL-200
5	Motor Housing + Stator	AISI 304
6	Shaft with Rotor	AISI 410
7	Oil Chamber	EN-GJL-200
8	Mechanical Seal	Upper : CA / CE Lower : SIC / SIC
9	Seal Housing	EN-GJL-200
10	Lip Seal	NBR
11	Impeller	EN-GJL-200
12	Pump Casing	EN-GJL-200
15-1	Upper Bearing	NTN/TPI
15-2	Lower Bearing	NTN/TPI

Note: Single lower bearing for 1.5HP/2HP;
Double lower bearings for 3HP/4HP/5.5HP;
TPI is a family brand of NTN group.



HIPPO-150-300 DN65



Dimensions (mm)

Type	A	A1	A2	A3	B	B1	B2	H	H1	H2	H3	H4
HIPPO-150 DN65	410	145	240	180	235	120	115	580	405	185	105	215
HIPPO-200 DN65	410	145	240	180	235	120	115	600	425	185	105	215
HIPPO-300 DN65	410	145	240	180	235	120	115	630	455	185	105	215
HIPPO-400 DN65	399	123	229	191	247	122	125	633	477	185	105	215
HIPPO-550 DN65	399	123	229	191	247	122	125	657	490	185	105	215
HIPPO-150 DN80	550	122	320	180	257	127	130	615	440	220	130	270
HIPPO-200 DN80	550	122	320	180	257	127	130	635	460	220	130	270
HIPPO-300 DN80	550	122	320	180	257	127	130	665	490	220	130	270
HIPPO-400 DN80	567	125	334	194	250	123	127	653	497	208	130	270
HIPPO-550 DN80	567	125	334	194	250	123	127	685	518	208	130	270